

**RASA1 Antibody (C-term)**  
**Affinity Purified Rabbit Polyclonal Antibody (Pab)**  
**Catalog # AP12950b****Specification**

---

**RASA1 Antibody (C-term) - Product Information**

Application	WB,E
Primary Accession	<a href="#">P20936</a>
Other Accession	<a href="#">P50904</a> , <a href="#">NP_002881.1</a> , <a href="#">NP_072179.1</a>
Reactivity	Human
Predicted	Rat
Host	Rabbit
Clonality	Polyclonal
Isotype	Rabbit IgG
Calculated MW	116403
Antigen Region	966-993

**RASA1 Antibody (C-term) - Additional Information****Gene ID** 5921**Other Names**

Ras GTPase-activating protein 1, GAP, GTPase-activating protein, RasGAP, Ras p21 protein activator, p120GAP, RASA1, GAP, RASA

**Target/Specificity**

This RASA1 antibody is generated from rabbits immunized with a KLH conjugated synthetic peptide between 966-993 amino acids from the C-terminal region of human RASA1.

**Dilution**

WB~~1:1000

E~~Use at an assay dependent concentration.

**Format**

Purified polyclonal antibody supplied in PBS with 0.09% (W/V) sodium azide. This antibody is purified through a protein A column, followed by peptide affinity purification.

**Storage**

Maintain refrigerated at 2-8°C for up to 2 weeks. For long term storage store at -20°C in small aliquots to prevent freeze-thaw cycles.

**Precautions**

RASA1 Antibody (C-term) is for research use only and not for use in diagnostic or therapeutic procedures.

**RASA1 Antibody (C-term) - Protein Information****Name** RASA1

**Synonyms** GAP, RASA

**Function** Inhibitory regulator of the Ras-cyclic AMP pathway. Stimulates the GTPase of normal but not oncogenic Ras p21; this stimulation may be further increased in the presence of NCK1.

**Cellular Location**

Cytoplasm.

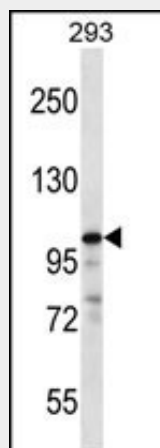
**Tissue Location**

In placental villi, detected only in the trophoblast layer (cytotrophoblast and syncytiotrophoblast). Not detected in stromal, endothelial or Hofbauer cells (at protein level)

**RASA1 Antibody (C-term) - Protocols**

Provided below are standard protocols that you may find useful for product applications.

- [Western Blot](#)
- [Blocking Peptides](#)
- [Dot Blot](#)
- [Immunohistochemistry](#)
- [Immunofluorescence](#)
- [Immunoprecipitation](#)
- [Flow Cytometry](#)
- [Cell Culture](#)

**RASA1 Antibody (C-term) - Images**

RASA1 Antibody (C-term) (Cat. #AP12950b) western blot analysis in 293 cell line lysates (35ug/lane). This demonstrates the RASA1 antibody detected the RASA1 protein (arrow).

**RASA1 Antibody (C-term) - Background**

The protein encoded by this gene is located in the cytoplasm and is part of the GAP1 family of GTPase-activating proteins. The gene product stimulates the GTPase activity of normal RAS p21 but not its oncogenic counterpart. Acting as a suppressor of RAS function, the protein enhances the weak intrinsic GTPase activity of RAS proteins resulting in the inactive GDP-bound form of RAS, thereby allowing control of cellular proliferation and differentiation. Mutations leading to changes in the binding sites

of either protein are associated with basal cell carcinomas. Alternative splicing results in two isoforms where the shorter isoform, lacking the N-terminal hydrophobic region but retaining the same activity, appears to be abundantly expressed in placental but not adult tissues.

#### **RASA1 Antibody (C-term) - References**

Hemerly, J.P., et al. Eur. J. Endocrinol. 163(5):747-755(2010)  
Wiemels, J.L., et al. Blood Cells Mol. Dis. 45(3):186-191(2010)  
Bachas, C., et al. Blood 116(15):2752-2758(2010)  
Oinuma, I., et al. J. Biol. Chem. 285(36):28200-28209(2010)  
Anand, S., et al. Nat. Med. 16(8):909-914(2010)